

Classroom Technology

Blue Bell
Pottstown

South Hall Classrooms

Montgomery County Community College

Power up the SMART Board



Turn on the Projector and Smartboard

Press the **Proj On** button on the Extron console. The projector will warm up and turn on within a minute. To turn the SMART Board off, press the **Proj Off** button.

Source

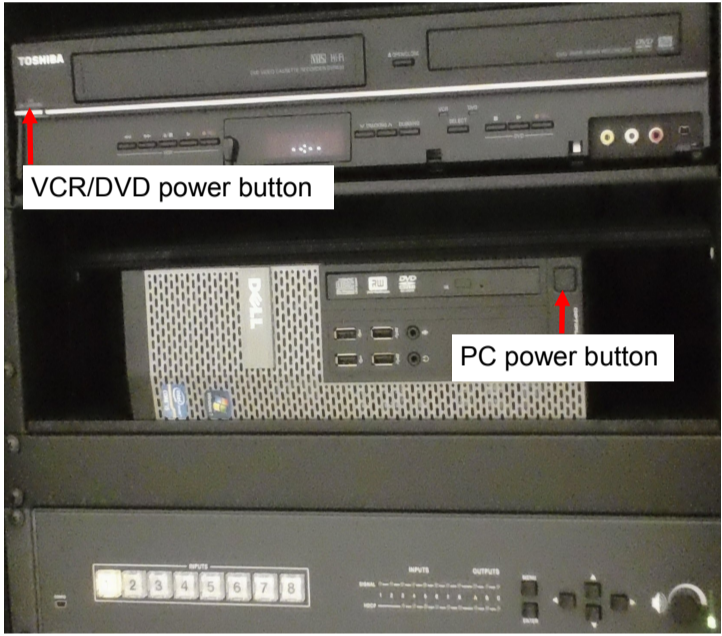
This controls what shows on the Smartboard. Select PC to use the classroom PC or select DVD, VCR, Laptop VGA, or Laptop HDMI.

Volume Control knob

Used to adjust the room volume. An on-screen display will show the volume setting.

To turn on the PC or DVD Player


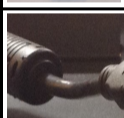

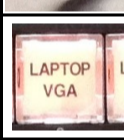
Open the cabinet under the instructor podium



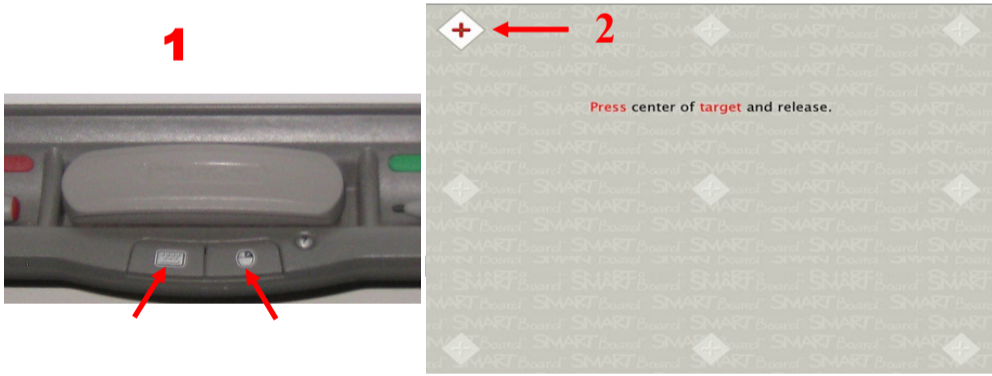
Using a Laptop

To use your laptop, open the cable cubby on the instructor podium to access the cables to connect your laptop.



	If your laptop has a <i>VGA</i> connection, plug the <i>VGA</i> cable into the <i>VGA</i> connection on your laptop.
	If your laptop has an <i>HDMI</i> connection, plug the <i>HDMI</i> cable into the <i>HDMI</i> connection on your laptop.
	Plug the audio cable into the outlet on your laptop to have the sound broadcast over the speakers in the classroom.
	Be sure that the correct "Laptop" button (<i>VGA</i> or <i>HDMI</i>) is selected as Source on console on the instructor podium.

Orienting the SMART Board



1. On the Smartboard, simultaneously press and hold down the keyboard and mouse buttons for a few seconds.
2. Follow the on-screen instructions by pressing the center of the target from one location to the next.

Troubleshooting Problems with the SMART Board

Problem:	Solution:
Nothing is displayed on the Smartboard <ul style="list-style-type: none">• Light on projector is red:• Light on projector is green:• Light on projector is off:	<ul style="list-style-type: none">• Press the Proj On Button on the Extron consol.• Select source on the Extron console again.• The projector may be off. Check the main power button on the back of the projector (if this cannot be reached, call the Help Desk at x6495 for assistance.)
Image only displays on half of Smartboard	Select source again.
VCR or DVD is not displayed on Smartboard	Tap VCR or DVD on the touch display panel.
Smartboard is not aligned	Follow the instructions above for Orienting the Smartboard .
Smartboard does not respond to touch	Restart the computer.
Laptop is connected but is not displaying on Smartboard	<ul style="list-style-type: none">• First select Laptop (VGA or HDMI) on the Extron consol.• If not successful, power off the laptop, re-connect the cables from the cable cubby, then turn on lap-top and select the appropriate laptop (<i>VGA</i> or <i>HDMI</i>) option on the Extron consol.